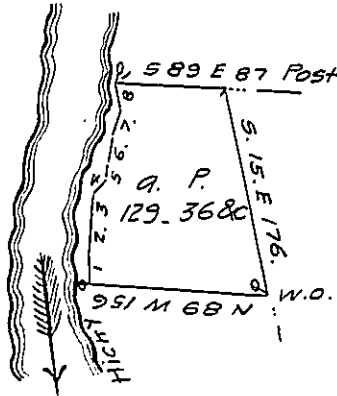


Courses & distances up River from
Hickory to Linn corner

- No. 1. N. 11. W. 23 ps. ✓
- 2. N. 1. E. 26. ✓
- 3. N. 3 1/2 E. 18. ✓
- 4. N. 20 1/2 E. 11. ✓
- 5. N. 10. E 15 ✓
- 6. N. 15 1/2 E 24 ✓
- 7. N. 11 1/2 E. 20. ✓
- 8. N. 21. E. 26

Jno D. Mc Williams



C-64-164
Thos Porter.

Thos Porter.

Draft of a tract of land situate in Cranberry township Venango
County East of and adjoining the Allegheny River, about 2 miles below
Franklin. Containing one hundred twenty nine acres thirty six perches
and allowance (it being improved.)

Surveyed April 18th 1845 in pursuance of a Warrant granted
to Gaylord Rice dated April 30, 1844.

Chas. H. Heydrick D.S.

To Jacob Gallade Esq: Sur: Genl

N. B. The above was surveyed by Wm. Cornely D.S. for Robt Brandon
Augt 7, 1841, on his improvement & settlement.

IN TESTIMONY that the above is a copy of the original remaining on file in
the Department of Internal Affairs of Pennsylvania, made
comformably to an Act of Assembly approved the 16th day of
February 1833, I have hereunto set my hand and caused
the Seal of said Department to be affixed at Harrisburg,
this thirtieth day of January 1907

Isaac D. Brown
Secretary of Internal Affairs.